

Around the world it is estimated

## +100 million animals

are used in experiments every year

EUROPEAN UNION  
11.5m

CANADA  
4.3m

AMERICA  
c.20m

CHINA  
c.16m

JAPAN  
c.11m

AUSTRALIA  
c.6.7m

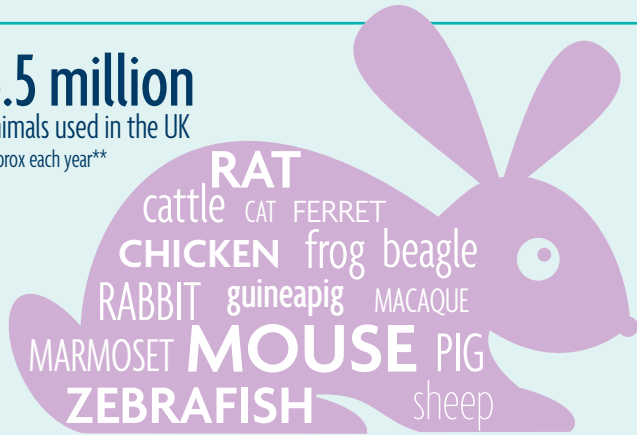
NEW ZEALAND  
0.24m

Attitudes towards animals, and the legislation in place regarding their use and welfare, can differ widely between countries

Countries vary in whether, and how, they count and report animal experiments. Some significant users (e.g Russia, India, Brazil) provide little or no information

## 3.5 million

animals used in the UK approx each year\*\*



creation and breeding of genetically altered animals

## 49%

Procedures

experiments

## 51%

Procedures

The majority of GA animals are mice and zebrafish

Percentage of animal research and testing undertaken in the UK

UNIVERSITIES AND MEDICAL SCHOOLS

## 50%

INDUSTRY

## 25%

OTHER

## 25%

## 3Rs and ethics

### REPLACEMENT

using humane methods which avoid or replace the use of animals

### REDUCTION

minimising the numbers of animals used

### REFINEMENT

improving experiments, housing and care to reduce suffering throughout animals' lives

## 18 Home Office Inspectors

(FTEs) evaluating licence applications and inspecting UK labs



## 3 Licences

are needed from the UK Home Office

ESTABLISHMENT LICENCES  
157

PERSONAL LICENCES  
16,109

PROJECT LICENCES  
3,136

Breeding and transport

Housing, handling, humane killing

Experimental procedures and their effects

### SOURCES OF POTENTIAL SUFFERING

\*MILD 53%

\*MODERATE 26%

\*SEVERE 5%

Each project proposal must undergo a harm-benefit analysis

