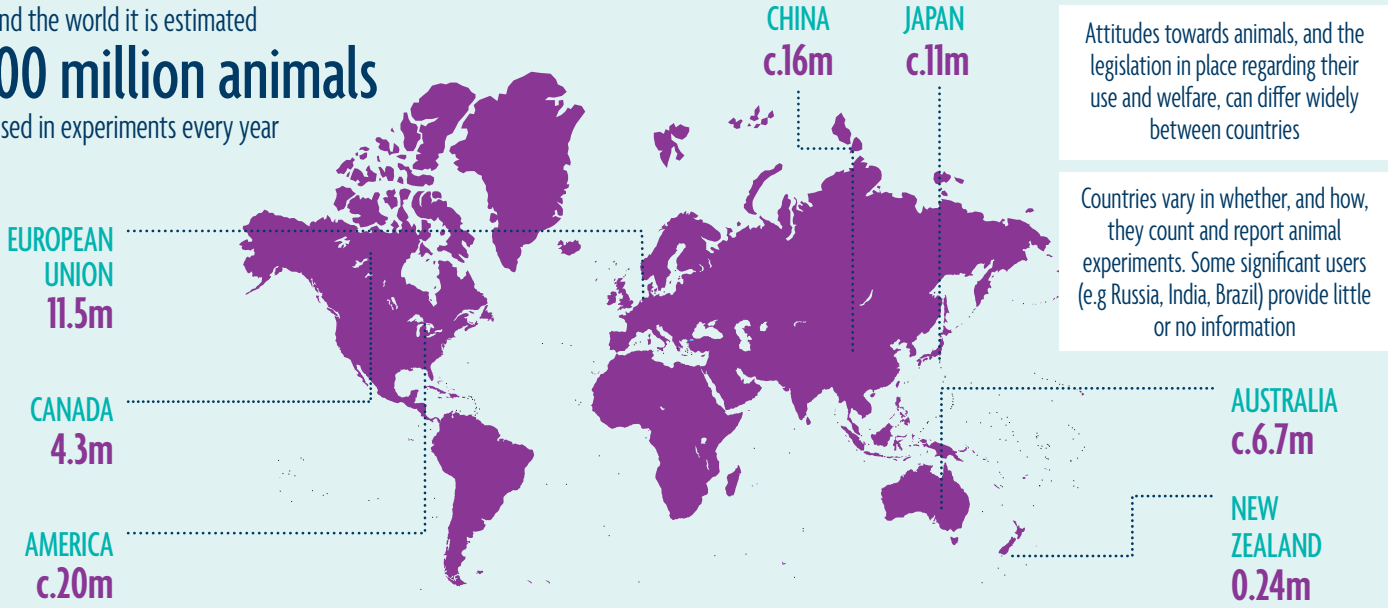


Around the world it is estimated

**+100 million animals**

are used in experiments every year

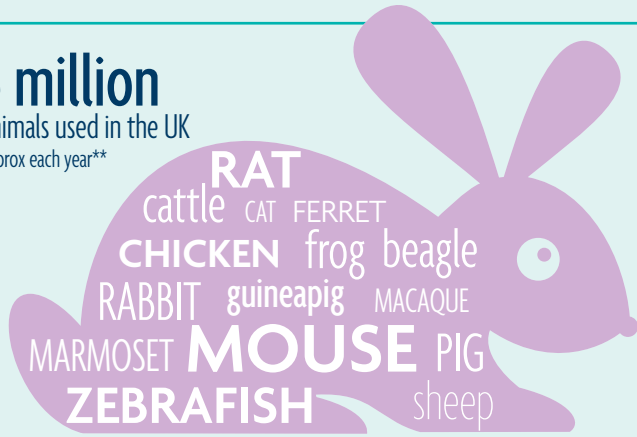


Attitudes towards animals, and the legislation in place regarding their use and welfare, can differ widely between countries

Countries vary in whether, and how, they count and report animal experiments. Some significant users (e.g Russia, India, Brazil) provide little or no information

**3 million**

animals used in the UK approx each year\*\*



creation and breeding of genetically altered animals

**43%**

Procedures

experiments

**57%**

Procedures

The majority of GA animals are mice and zebrafish

Percentage of animal research and testing undertaken in the UK

UNIVERSITIES AND MEDICAL SCHOOLS

**50%**

INDUSTRY

**25%**

OTHER

**25%**

**18 Home Office Inspectors**

(FTEs) evaluating licence applications and inspecting UK labs



**3 Licences**

are needed from the UK Home Office



Breeding and transport

Housing, handling, humane killing

Experimental procedures and their effects

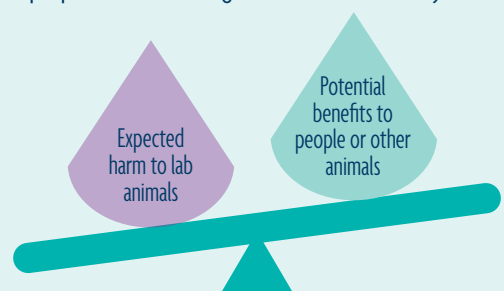
SOURCES OF POTENTIAL SUFFERING

\*MILD 50%

\*MODERATE 22%

\*SEVERE 3%

Each project proposal must undergo a harm-benefit analysis



**3Rs and ethics**

**REPLACEMENT**

using humane methods which avoid or replace the use of animals

**REDUCTION**

minimising the numbers of animals used

**REFINEMENT**

improving experiments, housing and care to reduce suffering throughout animals' lives