



Being an effective lay member of an AWERB

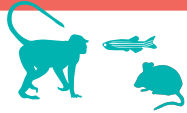
What you should know

The AWERB tasks, membership and role within the organisation

[Induction materials](#) >>>

[AWERB tasks](#) >>>

ANIMAL USE AT THE ESTABLISHMENT



Numbers and species of animals



Number of projects and areas of research



Severity of procedures



CULTURE OF CARE

how the establishment defines, drives and assesses this

[read more](#) >>>



PUBLIC ENGAGEMENT

is public information (e.g. on website or for the media) meaningful and balanced?

[read more](#) >>>

Your role



Providing a different and independent perspective



Asking the questions an interested member of the public might ask



Helping to consider whether and how animals are used



Asking how animal suffering is avoided or minimised

You are not expected to be 'an expert' or have in-depth knowledge of science [read more](#) >>>

Practical things to do



VISIT THE ANIMAL UNIT

to see the animals and talk to people caring for them

[read more](#) >>>



GET TO KNOW OTHER MEMBERS OF YOUR AWERB

e.g. Chair, vet, animal technologists, scientists, other lay members



EXPLAIN YOUR VIEWS CLEARLY TO RESEARCHERS

and show an interest in their work

[read more](#) >>>

Making a difference

Consider the animal's perspective and their lifetime experiences



Constructively challenge proposed 'harms' and 'benefits' when reviewing research projects

[read more](#) >>>

Encourage continuous improvement in standards of animal welfare and science



Help create a supportive environment for discussions

Ask for specific examples of how:

3Rs each of the 3Rs is being implemented

[read more](#) >>>

the establishment exceeds legal minimum standards for animal welfare



ethical issues are identified and considered

[read more](#) >>>

ATTEND

events for lay and other AWERB members
[lay members](#) >>> [AWERB members](#) >>>

READ

web resource on 'Ethical review'
[Ethical review](#) >>>

OTHER USEFUL LINKS

[Animals in Science Regulation Unit](#) >>>

[NC3Rs](#) >>>

[Norecopa](#) >>>