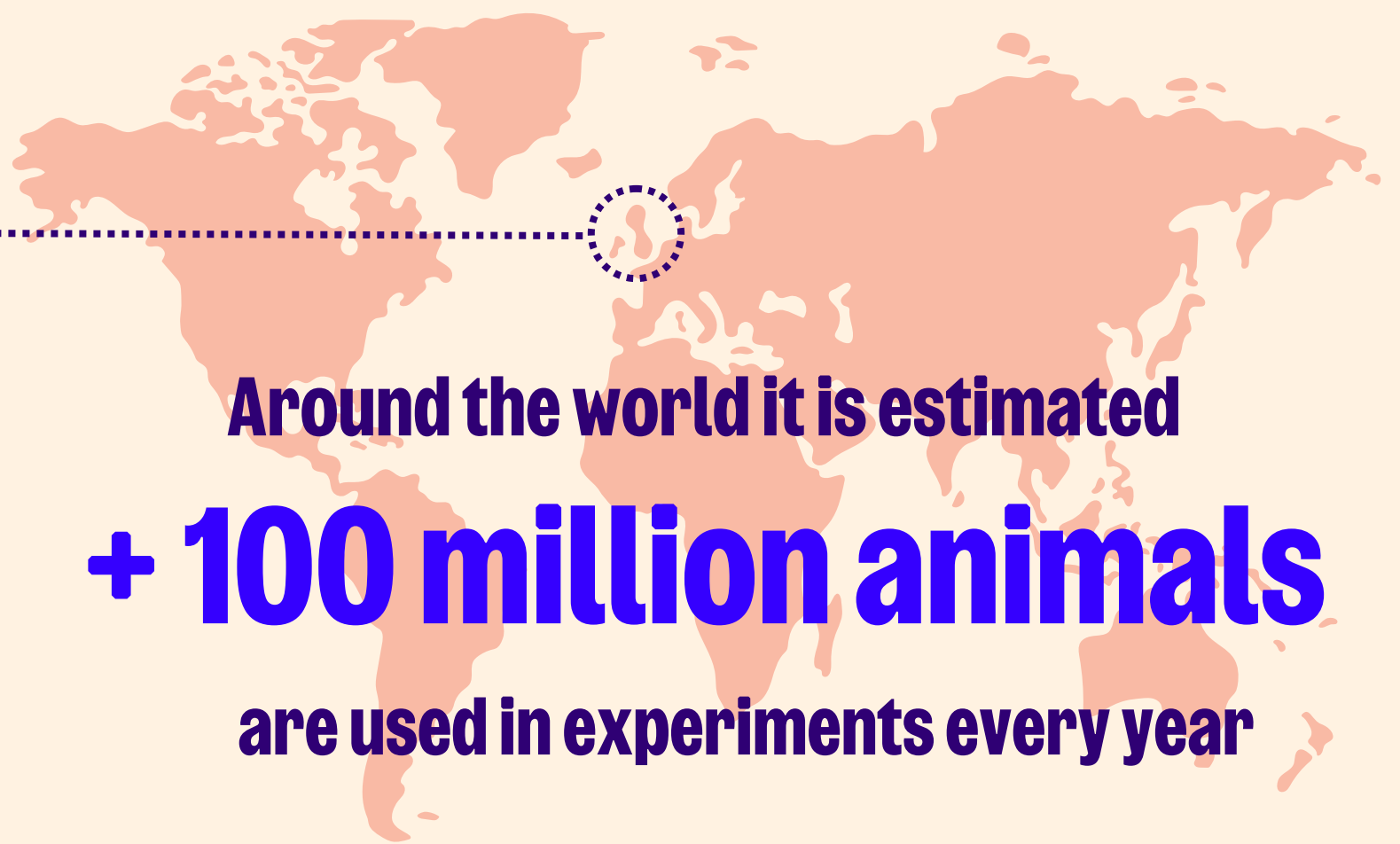


Attitudes towards animals, and the legislation in place regarding their use and welfare, can differ widely between countries

Countries vary in whether, and how, they count and report animal experiments. Some significant users (e.g. Russia, India, Brazil) provide little or no information



In the UK

2.6 million animals

are used each year



3 Licences

are needed from the UK Home Office

Establishment

134

Project

2,315

Personal

13,311

Experiments

54%

procedures

Creation and breeding of genetically altered animals

46%

procedures

Breeding and transport

Housing, handling, humane killing

Experimental procedures and their effects

Sources of potential suffering

Mild

48.4%*

Moderate

28.1%*

Severe

3.4%*

3Rs and ethics

Replacement

Using humane methods which avoid or replace the use of animals

Reduction

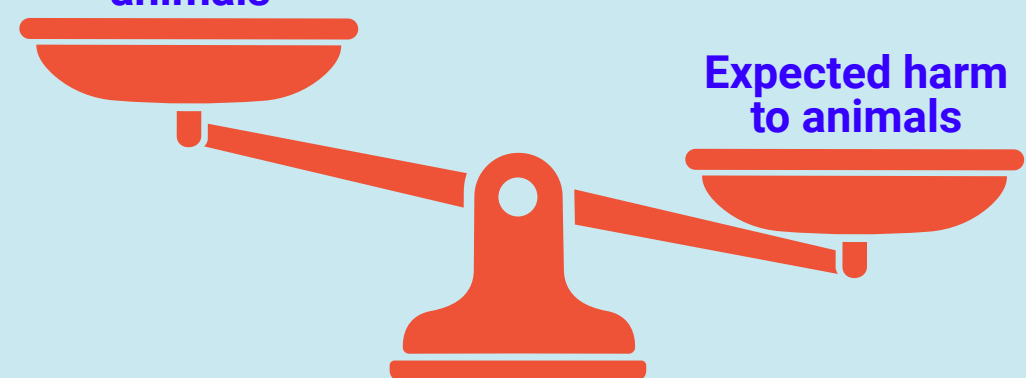
Minimising the numbers of animals used to answer the scientific question

Refinement

Improving experiments, housing and care to reduce suffering throughout animals' lives

Each project proposal must undergo a harm-benefit analysis

Potential benefits to people or other animals



Expected harm to animals