

# Working Party Report

## A guide to defining and implementing protocols for the welfare assessment of laboratory animals: eleventh report of the BVAWF/FRAME/RSPCA/UFAW Joint Working Group on Refinement\*

**P Hawkins (Editor)<sup>1</sup>, D B Morton (Chair)<sup>2</sup>, O Burman<sup>3</sup>, N Dennison<sup>4</sup>, P Honess<sup>5</sup>, M Jennings<sup>1</sup>, S Lane<sup>6</sup>, V Middleton<sup>7</sup>, J V Roughan<sup>8</sup>, S Wells<sup>9</sup> and K Westwood<sup>10</sup>**

<sup>1</sup>Research Animals Department, RSPCA, Wilberforce Way, Southwater, West Sussex RH13 9RS, UK; <sup>2</sup>82150 Valeilles, France; <sup>3</sup>Department of Biological Sciences, University of Lincoln, Riseholme Park, Lincoln LN2 2LG, UK (formerly Animal Welfare & Behaviour Research Group, University of Bristol, Langford House, Langford, Bristol BS40 5DU, UK); <sup>4</sup>Animals (Scientific Procedures) Inspectorate, Home Office, PO Box 6779, Dundee DD1 9WW, UK; <sup>5</sup>Department of Veterinary Services, University of Oxford, Parks Road, Oxford OX1 3PT, UK; <sup>6</sup>Novartis Horsham Research Centre, Wimblehurst Road, Horsham, West Sussex RH12 5AB, UK; <sup>7</sup>Huntingdon Research Centre, Woolley Road, Alconbury, Huntingdon, Cambridgeshire PE28 4HS, UK; <sup>8</sup>Centre for Behaviour and Evolution, Institute of Neuroscience, The Medical School, Newcastle University, Framlington Place, Newcastle upon Tyne NE2 4HH, UK; <sup>9</sup>Medical Research Council Harwell, Mary Lyon Centre, Harwell Science and Innovation Campus, Oxfordshire OX11 0RD, UK; <sup>10</sup>Companion Animals Department, RSPCA, Wilberforce Way, Southwater, West Sussex RH13 9RS, UK

\*The UK Joint Working Group on Refinement (JWGR) was established in 1989 by the British Veterinary Association Animal Welfare Foundation (BVAWF), the Fund for the Replacement of Animals in Medical Experiments (FRAME), the Royal Society for the Prevention of Cruelty to Animals (RSPCA) and the Universities Federation for Animal Welfare (UFAW). The aim is to provide up-to-date practical information on refinement. The JWGR prepares reports on specific topics, drawing together experts in each field to define contemporary best practice and ideals to aspire to. Professor David Morton chairs the Group and the secretariat is provided by the RSPCA. See <http://www.rspca.org.uk/sciencegroup/researchanimals/implementing3rs/refinement> (last checked 26 May 2010). Corresponding author: P Hawkins. Email: [phawkins@rspca.org.uk](mailto:phawkins@rspca.org.uk)

### Abstract

The refinement of husbandry and procedures to reduce animal suffering and improve welfare is an essential component of humane science. Successful refinement depends upon the ability to assess animal welfare effectively, and detect any signs of pain or distress as rapidly as possible, so that any suffering can be alleviated. This document provides practical guidance on setting up and operating effective protocols for the welfare assessment of animals used in research and testing. It sets out general principles for more objective observation of animals, recognizing and assessing indicators of pain or distress and tailoring these to individual projects. Systems for recording indicators, including score sheets, are reviewed and guidance is set out on determining practical monitoring regimes that are more likely to detect any signs of suffering. This guidance is intended for all staff required to assess or monitor animal welfare, including animal technologists and care staff, veterinarians and scientists. It will also be of use to members of ethics or animal care and use committees. A longer version of this document, with further background information and extra topics including training and information sharing, is available on the *Laboratory Animals* website.

**Keywords:** Refinement, welfare assessment, pain assessment, score sheets, humane endpoints

*Laboratory Animals* 2011; 45: 1–13. DOI: 10.1258/la.2010.010031

## 1 Introduction and aims

Reducing animal suffering through the refinement of husbandry and procedures is an important component of good science.<sup>1–5</sup> It is also essential for humane reasons

and is a specific requirement of legislation in some countries. If reducing animal suffering is to be effectively achieved, suffering must be detected as rapidly as possible so that appropriate action may be taken such as providing

analgesia, applying a humane endpoint, reviewing husbandry and enrichment or euthanizing the animal.

Some signs of animal suffering are relatively easy to identify and assess, and many papers have been published on the assessment of welfare, both in general and following specific procedures.<sup>6–10</sup> Despite this, there is still much reliance on subjective assessments and individual opinion.<sup>11</sup>

Discussion on these issues with veterinarians, animal care staff and scientists from a number of facilities in the UK established that it would be helpful to have further advice on objective methods for predicting and assessing welfare and animal suffering.<sup>11</sup> The aim of this document, therefore, is to provide practical guidance on setting up and operating effective protocols for the welfare assessment of animals within individual projects. It should prove useful for all staff required to assess or monitor animal welfare, including animal technologists and care staff, veterinarians, scientists and members of ethics or animal care and use committees. Although it was produced in the UK, the issues and guidance apply worldwide.

There is also a longer version of this guide, which includes further background information and topics such as training and information sharing. The full version can also be used to assist in project design, as a discussion document for ethics or animal care and use committees, and to help funding bodies and regulators wishing to ensure that welfare will be properly assessed and suffering minimized in projects that they support or license [<http://la.rsmjournals.com/cgi/content/full/la.2010.010031/DC2>].

## 2 General principles for an effective welfare assessment scheme

The best approach to welfare assessment for each project depends on the type of establishment and its particular working practices, the nature of the research or testing, and the species and numbers of animals involved. However, there are some fundamental principles that should underpin all welfare assessment schemes. These are set out in Table 1 and explained more fully in the rest of the document.

### 2.1 A team approach

A team approach to welfare assessment is highly effective, because it allows input from people with different expertise, priorities and responsibilities. This should enable animal welfare to be given due priority, while also taking into account scientific requirements and the resources available for animal monitoring. Who is involved in welfare assessment, and how the process operates for each project, will depend on the nature of the individual project and establishment and the experience, expertise and resources available in-house. The end result could be a fixed group or a more fluid association of people, or the welfare assessment process may form part of the remit of an existing committee. It is most effective to take a flexible, tailored approach and consider the skills, knowledge, experience, motivation and authority that are required before identifying the team members who can bring them. Whatever the structure of the team, the competencies that are invaluable in establishing it are listed in Table 2.

**Table 1** General requirements for effective welfare assessment

#### A team approach

A team approach is the most effective way to ensure consistency and effectiveness.<sup>11</sup> The team should include people with a variety of relevant roles and expertise who are prepared to work together constructively.<sup>4</sup>

#### Appropriate welfare indicators

An animal's welfare state cannot be directly measured, but it can be inferred by monitoring appropriate behavioural and physiological parameters that can be used as welfare indicators. It is critical to define and monitor the right types and number of indicators – too many and the system will take too long to implement, too few and it may be inaccurate and misleading.

#### A sound understanding of good welfare and the 'normal' animal

Effective welfare assessors must be able to recognize a 'normal' animal, with good welfare, in order to detect early signs of adverse effects. However, the definitions of both 'good welfare' and 'normal' need to be very carefully considered. This is explained in section 2.2.

#### Full recognition of all potential adverse effects from all sources

There are many potential causes of adverse effects during the animals' lifetime, i.e. not just the scientific procedures but other factors such as husbandry, handling and transport. An effective welfare assessment scheme will consider all sources of potential harms and all the adverse effects associated with them.

#### Consistency for all species

Ideally, welfare assessment protocols should pay the same level of attention to all species, regardless of the numbers of animals used or perceptions about their cognitive capacity and ability to suffer.

#### Consistency between observers

Minimizing variation between assessors' observations is essential.

Differences in observational skills and subjective interpretations can be reduced by effective training and teamwork, and also by ensuring that observations are adequately described and recorded in a meaningful way.

#### Appropriate recording systems

There are a number of different systems for recording welfare assessment data, each of which has particular advantages and disadvantages that make it suitable for use in different situations. Data should be captured using a consistent language and format, with the most appropriate recording system for each establishment, species, project and group of personnel.

It is important to promote good communication, team cohesion and constructive working relationships, both within the team and between the team and other relevant groups or committees at the establishment, such as ethics or animal care and use committees or Three Rs groups. Information about levels of harms provided by the welfare assessment team will be useful in developing and implementing refinements, as well as informing the harm/benefit judgements that ethics committees may make. The online version of this report provides further explanation of interactions and overlap between the welfare assessment team and other bodies within each study.

A welfare assessment protocol should be developed for each specific project. This should be initiated early in the project planning stage, before the project has been before regulators or review committees, so that welfare assessment is taken into account within the experimental design.

### 2.2 Definition of good welfare

A baseline standard of good welfare should first be defined, to act as the point of reference for the species (and strain, where relevant) to be used in the study. This standard may apply establishment-wide for particular species or

**Table 2** Competencies for a successful welfare assessment team

The team should include members who:
Can recognize a 'normal' animal and understand 'normal' behaviour for the species and strain, in the laboratory environment
Understand the science relating to the project
Can recognize all the potential welfare issues (both within the project and throughout the animals' lives)
Can recognize and identify animals showing adverse effects as a result of scientific procedures
Can identify an animal who is not 'normal' but where this deviation from normality is not an adverse effect resulting directly from scientific procedures*
Can assess and interpret welfare indicators
Are able to give advice on ameliorating (or avoiding) adverse effects
Bring in comparative knowledge across different species and institutes
Are able to address management and resource issues, such as staffing levels, either directly or by communicating with management
Will take ultimate responsibility for acquiring up-to-date information on welfare assessment
Advice may sometimes be necessary from people with expertise in:
Statistics – in relation to ensuring consistency between observers, comparing predicted with observed severity, etc.
Ethology – for a deeper understanding of animal behaviour
Animal welfare science – for the interpretation of how behaviour, physiology, psychology, immunology, neuroendocrinology, etc. reflect welfare and how to assess these aspects
Setting out strategies for implementing and evaluating refinement

\*Two examples are animals on a long-term study becoming 'institutionalized' and spontaneous occurrences of hydrocephalus in C57BL/6 mice

strains. However, setting such a baseline is not always straightforward, particularly where behaviour is used as an indicator of welfare. For example, genetically altered (GA) mice with vestibular abnormalities spend much time circling in their cage. This is the normal behaviour for these animals, but is not necessarily desirable from a welfare point of view.<sup>†</sup>

Similarly, understimulating housing can cause stereotypic behaviour,<sup>12</sup> which is normal in such environments, but can indicate a serious welfare problem. The term 'natural' is sometimes used instead of normal, but this is no more descriptive – what is normal behaviour for a laboratory animal is not necessarily natural.<sup>5</sup>

A more useful reference point for the welfare assessment protocol is to define a hypothetical 'ideal' level of welfare. This can be defined as: *the state of being in animals when their nutritional, environmental, health, behavioural and mental needs are met.*<sup>13</sup> There are three key components to this ideal, set out in Table 3.

There is usually no need to measure all of these parameters to set the baseline. The ideal state can be assumed to exist if the team is *confident* that animal housing and care is consistent with best practice, the animals are healthy, behaving according to an appropriate time budget and they are fully habituated to their accommodation and husbandry routines.

<sup>†</sup>In GA animals, use of the term 'normal' should be avoided in the context of welfare assessment because it refers to the wild type strain that has been used to generate the mutant line. The term 'as described for wild type' is thus more descriptive than 'normal' and 'deviating from expected' is preferable to 'abnormal'.

**Table 3** Components of an 'ideal' welfare state and examples of indicators associated with them

Component	Characteristics	Examples of indicators
(i) Physical state	Good level of physiological fitness, with no physical disabilities that either cause discomfort or pain, or that have an impact on physical function that could cause distress	Indicators relating to the observable physical condition of the animal, e.g. body weight, state of the coat, posture, lameness and excessive attention to surgical sites
(ii) Physiological/ biochemical state	Levels of stress and distress do not exceed those that would occur during the course of normal social interactions, for example. If parameters such as heart rate or blood pressure were to be measured, they would not be expected to indicate significant stress	Physiological parameters such as heart rate, respiratory rate, levels of stress hormones such as corticosteroids
(iii) Psychological state	The animal displays an 'appropriate' range of behaviours, according to what is known about the species and strain	Changes in behaviour such as increased aggression to cage mates, withdrawal, stereotypies and changes in use of enrichment

There are many potential causes of suffering during the animals' lives that may impact on current or future welfare assessments. Causes of deviation from the ideal welfare state may include early separation from the mother, transport, trapping, inappropriate housing, inadequate health care, scientific procedures and their after effects (expected and unexpected), husbandry procedures (such as cleaning out and identification) and euthanasia or release.<sup>2,14–16</sup> These events can interact with one another. For example, stress due to early separation from the dam can influence nociception in rats.<sup>17</sup>

Taking all this into account and assuming that the baseline standard is good, any deviation from this ideal state could indicate a welfare problem and should be investigated as such. Note, however, that some physiological parameters can alter in association with positive excitement, such as play, as well as with negative stimuli. Furthermore, many commonly used species, particularly rodents, do not always display behavioural signs of suffering that can easily be detected by human observers. These issues can be overcome by thoughtful selection and interpretation of welfare indicators.

### 2.3 Selection of appropriate welfare indicators

Key to the success of the welfare assessment scheme is the selection of welfare indicators that:

- Are readily and reliably recognizable;
- Are effective at providing good measures of welfare;



- Are relevant to the project and species;
- Are practical to carry out and do not overly disturb the animal;
- Take the experimental design into account; and
- Lend themselves to consistent measurement, interpretation and analysis.<sup>4,18</sup>

It is preferable to use a combination of indicators from each of the categories listed in Table 3 to overcome difficulties with interpretation and to provide a more detailed and complete picture of an animal's welfare.<sup>11,19</sup>

### 2.3.1 General indicators

A list of simple, objective welfare indicators, such as body weight and condition (physical state in Table 3), measured body temperature (physiological state) and food and water consumption (this may fall into any of the three categories), can be drawn up for use in most projects. These indicators can be directly and objectively measured, providing clear indicators that an animal's welfare may be compromised. They are also useful for defining and implementing humane endpoints.<sup>11</sup>

### 2.3.2 Indicators specific to the project

The next stage is to predict the likely adverse effects, so that a list of indicators can be produced that is tailored to the study. For example, following vasectomy surgery, mice would be expected to experience a degree of pain associated with the wound site as an adverse effect. Indicators of this adverse effect would include body weight loss (a general indicator) and behavioural indicators specific to the project such as lifting a hind leg or pressing the abdomen to the cage floor.<sup>20</sup> These behaviours can be used as indicators for welfare assessment post-vasectomy. Table 4 lists sources of information and guidance that can be used to predict adverse effects.

The list of potential adverse effects could include items such as discomfort or pain in specific areas of the body, nausea or other toxicological effects, anxiety, reduced physical ability and so on. The next step in the process is to consider what the behavioural or physiological indicators of these adverse effects might be. Some commonly used indicators that are associated with various adverse effects are arching the back, twitching and writhing and/or drawing in of the flank in rodents, slack muscle tone around the eyes in birds, skin colour changes in fish or reluctance to move in many species. The list of indicators for all species is continually expanding; a recent addition is the use of facial expressions in the mouse.<sup>22</sup> Interactions with the environment, such as gnawing on chew blocks or nest building, can also provide extremely useful indicators, which is another reason for providing a structured environment.<sup>19</sup>

The Appendix [<http://la.rsmjournals.com/cgi/content/full/la.2010.010031/DC1>] lists sources of further examples of welfare indicators. For a more in-depth approach to estimating the probability of pain and distress, its consequences and associated risk levels, see National Health and Medical Research Council (2008)<sup>4</sup> and for training in all of the above see *Assessing the Health and Welfare of Laboratory Animals*, <http://ahwla.org.uk/> (last checked 26 May 2010). Table 5 sets out an approach for identifying indicators and

**Table 4** Sources of information and guidance on predicting potential adverse effects

Information from care staff (and breeders, if possible and applicable) on sourcing, transport, identification methods, husbandry regimes, etc. and their welfare implications
Harm–benefit analyses that have already been carried out
Past experience, if other, similar studies have been carried out using the same species or strain
Results of <i>in vitro</i> and <i>in silico</i> studies, e.g. Quantitative Structure–Activity Relationship (QSAR) where chemical structure is correlated with biological activity
Searching the literature for publications of similar studies. Papers including adverse events can be extremely valuable
In a contract research setting, information obtained during the testing of other compounds (e.g. for agrochemicals, signs may be comparable between similar classes of compounds), chemical structure or information supplied with test compounds
Information from pilot studies, for example, data on absorption
In pharmaceutical research and development and safety assessment, information on the 'target', or predicted pharmacological action, not only of the parent compound, but also of any metabolites that may be formed*
For some models of animal diseases, e.g. using the same species as the target species, clinical signs of the disease in clinical cases
For models of human disease, clinical signs and symptoms of the disease in humans can provide pointers. This should be done with care, as clinical signs may differ in animals; research projects are usually only modelling certain aspects of a condition <sup>21</sup>
Contacting other researchers using the same or similar models, possibly using online discussion groups such as Compmed
Published resources, including those listed in the Appendix

\*Commercial computer databases (e.g. DEREK<sup>®</sup>) are excellent resources for accessing known information on chemical structure and activity of parent compounds and their metabolites. They can also provide very good predictive activities for naïve compounds, although these predictive systems are not perfect

considering how each indicator might best be monitored and assessed.

Welfare assessment is an ongoing process and it is likely that the list of indicators will need to be reviewed and

**Table 5** Identifying indicators for each adverse effect

What might the observable or measurable indicators be in an animal experiencing this effect? How should they be described?
How frequently should animals be monitored, and at what times, to ensure that the indicators will be picked up?
How could the indicators be assessed and which method is preferable and most feasible?
<ul style="list-style-type: none"> <li>• Measured objectively?</li> <li>• Observed and marked as present or absent?</li> <li>• Assigned a numerical score?</li> </ul>
Will the benefits of monitoring outweigh any disturbance that may be caused? Or, could disturbance be minimized by including welfare assessment when the animals will be disturbed anyway, e.g. at a project-driven body weight check?
Will invasive techniques be involved, such as blood sampling or implanting telemetry devices solely for monitoring purposes?*
Will measuring the indicators adversely affect the scientific outcome? Or, conversely, could data gathered for scientific purposes also be used to assess welfare?
Can any environmental indicators be used, e.g. interaction with enrichment items such as climbing resources or nesting material?

\*The use of invasive procedures for welfare monitoring or implementing humane endpoints requires a carefully considered harm–benefit assessment and consultation with veterinarians and regulators (the latter with respect to any legal implications). It may also affect the harm–benefit assessment of the project as a whole<sup>23</sup>

updated as the work progresses, according to the validity of each indicator and the information it can provide. The aim is to include the minimum number of parameters necessary to detect adverse effects rapidly and effectively, yet not waste time gathering data that have no added value. It may be possible to reduce the number of indicators by using so-called 'iceberg indicators' that summarize other areas of welfare and are easy to understand.<sup>24</sup> One such indicator is a lack of grooming after surgery, which could indicate an inability to coordinate grooming movements, postoperative pain or, if shortly after surgery, the side-effects of anaesthetic or analgesic agents.

Adverse effects and their behavioural indicators can sometimes be completely unpredictable, especially when testing novel compounds or in mutagenesis projects. In such cases, there will be some knowledge gaps and welfare assessment is approached blind, and thus there is a strong case for including as many potential indicators as is workable in the initial assessment. It may also be possible to acquire more information by consulting with outside experts and/or undertaking a small pilot study to help define appropriate indicators (see section 2.3.4). This is especially likely to be necessary when using new species or novel techniques.

### 2.3.3 Intervention points

It is essential for animal welfare, ethical and often legal reasons that clearly defined intervention points are set for each project. Suitable interventions when key signs appear, or reach a threshold level, should be defined at the time when indicators are discussed. For example, fluid therapy could be initiated as soon as signs of dehydration appear, or an intervention for weight loss of 10% in rats with a degenerative condition could be providing wet mash at floor level. Humane endpoints should also be defined at this stage, in which the animal is temporarily or permanently removed from the study.

Thresholds should be established that allow minimal animal suffering while still attaining the objective of the study, and so any intervention and its timing will need to be agreed with the researcher and regulator at an early stage. Some clinical signs may be expected as part of the model. One such case is pale extremities in animals used to study cardiovascular disease. The welfare assessment system should include clear guidance on those effects that are to be expected as part of the model, and what the endpoint is for each one.

### 2.3.4 Pilot studies

Pilot studies using a small number of animals can provide useful guidance on welfare indicators where these are difficult to predict, for example, for the testing of novel compounds or for newly developed experimental designs. The results of pilot studies can not only provide the indicators for the final project, but also help to guide refinements, including intervention points and humane endpoints.

The first animals in a pilot study should be monitored extremely carefully, using frequent sampling and a broad range of indicators, so as to gain as much information as possible about potential adverse effects and their

progression. In the case of pilot studies where effects are highly unpredictable or potentially severe, it is advisable for an experienced animal technologist and/or the attending veterinarian to be present to assist with monitoring.

### 2.3.5 Indicators of positive welfare

Welfare assessment generally focuses on negative rather than positive welfare. However, it is also desirable to improve the animals' quality of life as well as to minimize suffering, so the potential to define signs of positive welfare and the addition of these to the welfare assessment system should be considered. A general list of examples of behaviours to be considered is set out in Table 6.

Positive welfare signs will vary considerably with species, strain, life experience and individual temperament of animals. Indicators such as these therefore need careful interpretation, using the animal behaviour literature and advice from ethologists. For example, some strains of rodent are passive or have low activity levels, but this does not necessarily relate to individuals' wellbeing. Some behaviours, such as tail chasing in rats, can mistakenly be believed to be play when the behaviour is in fact a self-directed activity in response to social isolation.<sup>29</sup>

Knowledge about reliable signs of positive welfare is limited for many species at the time of writing. However, this is an evolving branch of animal welfare science and it is important to keep developments under review. For further information, see Boissy *et al.*<sup>27</sup> Kirkwood *et al.*<sup>30</sup> Wemelsfelder,<sup>31</sup> and Yeates and Main.<sup>32</sup>

## 2.4 Animal welfare indicator record systems

There are different systems in common use for recording welfare indicators. We have broadly categorized them as (i) relatively unstructured records, with a small number of objective signs and a reliance on written descriptions of adverse effects (free text), or (ii) more organized animal welfare assessment sheets with predetermined, but flexible, lists of indicators and minimal free text. The latter may be either numerical or binary score sheets. Numerical sheets aim to quantify the severity of adverse effects; binary systems simply note whether or not the adverse effects are present.

Relatively simple records with free text may be most appropriate in certain circumstances, for example during

**Table 6** Examples of behaviours that can indicate positive welfare states

Good self-care, including grooming and 'comfort' behaviours
Normal activity levels and time budget, including sleep patterns <sup>25</sup>
Seeking interactions with humans
Curiosity and interest in exploring
Appropriate social interactions with conspecifics, including allogrooming
Mating
'Anticipatory' behaviour <sup>26</sup>
Using enrichment items, especially for 'luxury' behaviours
Interest in food treats
Play <sup>27,28</sup>
Vocalizations associated with positive welfare
Normal learning and cognitive functions

pilot studies, where there is a requirement for a flexible and exploratory approach. They are also used where adverse effects are highly unpredictable and animals are monitored very closely. In general, however, consistency and objectivity are best achieved by using organized sheets and keeping free text to a minimum (Table 7). Achieving consistency in the language used to describe the appearance and behaviour of animals is critically important, both within the welfare assessment team and between different establishments. (An interactive project dedicated to standardizing the language used to describe mice is ongoing. See [www.mousewelfareterms.org](http://www.mousewelfareterms.org) [last checked 26 May 2010].)

In the case of numerical score sheets, a number of clinical signs, physical indicators and behavioural parameters are assessed and given a score according to their apparent severity. For example, unaffected would score 0, mild deviation from normal might score 1, moderate deviation from normal 2, and substantial deviation 3. Scores are often added up and the results are used to determine whether action is needed (such as analgesia) according to a predetermined key attached to the sheet (Figure 1). Numerical scoring can also form the foundation of more complex assessments of welfare, for example in assessing cumulative suffering.<sup>33</sup>

However, numerical scores need careful interpretation. Simple addition may be justified in some cases but not others, and some parameters may need to be weighted. In the example shown in Figure 1, a score of 2 for staring coat and 2 for isolation from cage mates does not 'equal' a 4 for a hot, distended gut; an animal with a score of 4 is not suffering twice as much as an animal with a score of 2. It is also conceivable that an animal may be experiencing severe suffering and yet have a score that does not require action, although empathy and common sense on the part of the assessor should protect the animal from avoidable suffering in such cases.

In contrast, the binary system records either a 'yes' (present) or 'no' (absent) depending on whether the

behaviour or effect is seen or not, with no description of its intensity. Core parameters such as body weight are also usually measured and recorded. The binary system is generally regarded as being more objective than the numerical system, as value judgements on severity are not required. However, objectivity should not be taken for granted; checks should still be made that people are using the system consistently.

The numerical and binary systems each have their own strengths and weaknesses and will be appropriate in different contexts (Table 8).

Whichever recording system is chosen, it should be adapted for specific studies and then regularly revised and modified with use if necessary. It may be that expected indicators occur infrequently, in which case they may be deleted, or if they are vital to the assessment, sampling frequency should be altered to ensure that they are picked up. Conversely, unexpected adverse effects may occur (as noted in the free text boxes) and indicators for these should be added to the sheets.

As a final note of caution, it should not be assumed that any welfare assessment system is infallible. There is always the potential for unpredicted adverse effects to occur, or for a particularly empathetic assessor to detect very subtle and previously unrecognized clinical signs. Balance is essential between striving for objectivity in welfare assessment on the one hand, and trusting the judgement of empathetic individuals on the other.

## 2.5 Assessment timing, duration and frequency

Once the recording system has been designed, a monitoring protocol can be set out that includes how often to assess animals, at what point in their activity phase and how long to spend on the assessment. The specific details of implementation will depend on the factors set out below. Clearly, the more animals that need to be assessed, the more time is needed. It is essential that adequate resources are in place to allow effective monitoring.

### 2.5.1 Species and strain

Ideally, all species should be regarded as equally capable of suffering and should be given equal consideration. However, there are some genuine, practical issues that influence the level of complexity of the assessment and the time that it takes to conduct (and analyse) it. There are more measures of welfare available for some species than others, which can impact on the time required to carry out welfare assessment. Some species display behaviours that are comparatively easy for humans to detect and interpret. A depressed primate displays a characteristic hunched posture which is easy for most observers to recognize and empathize with.<sup>34</sup> The signs of poor welfare may be more difficult and time consuming to recognize in other species such as small rodents and non-mammals; there are also likely to be differences between strains in both normal behaviour and responses to pain, suffering or distress.

**Table 7** Advantages of structured animal welfare assessment sheets

Signs are recorded consistently using agreed, defined terms, and so assessments of suffering should be more objective.
The system is flexible and can be made species-specific, strain-specific and model-specific.
Experienced persons can use the outcomes to illustrate to less experienced persons the reasons why an animal is 'not right'.
The system can be set up so that single signs, or a combination of signs, can be used to indicate the overall severity of a procedure.
The effectiveness of any therapy intended to relieve adverse effects can be determined.
Procedures that are likely to affect welfare can be indicated, so that interventions in response to predictable adverse effects or welfare issues can be agreed in advance, and action taken without delay.
The impact of scientific procedures on animals can be measured more meaningfully and the effectiveness of refinement strategies can be compared.
Free text boxes are still included so that unforeseen signs can be noted, as can disturbances such as visits by unfamiliar people, lighting system failures or building noise, all of which can affect welfare and experimental results. <sup>14</sup>

Component (see Table 3)	Animal ID	Score	Date/time	Date/time
Body weight	Normal or up to 5% loss	0		
	5–10% loss	1		
	Over 10% loss	2		
Physical state	Normal	0		
	General lack of grooming	1		
	Staring coat and/or ocular or nasal discharge	2		
	'Pinched' features, ridge lines in skin	4		
	Faeces normal to slightly soft	0		
	Diarrhoea	1		
	Soft, distended gut, no faeces	2		
	Hard, hot, distended gut	4		
Physiological state	Normal breathing	0		
	Slightly laboured breathing	1		
	Notably laboured breathing	3		
Psychological state	Normal provoked behaviour	0		
	Slightly subdued	1		
	Moderate change in behaviour and/or apart from cage mates	2		
	Reacts violently/vocalization	6		
Other observations				
TOTAL				

Interventions:

- 0 Normal
- 1 or 2 Monitor more closely
- 3–5 Monitor closely, consider analgesia, notify researcher
- 6–10 Significant suffering likely, provide appropriate relief, observe frequently, consider euthanasia
- Over 10 Severe suffering, euthanize

Figure 1 Example taken from a numerical score sheet for rats used in inflammatory bowel disease studies (NB this is not a complete sheet)

Awareness of all of the above issues relating to genuine and perceived difficulties with assessing different species and strains, and consultation with ethologists and other relevant experts to resolve these, can help to facilitate consistent consideration for all animals.<sup>35</sup>

With respect to GA animals, many gene manipulations have had both predictable and unpredictable characteristics that affect welfare, but which may not always be detected using standard phenotyping protocols.<sup>36</sup> The welfare of founder animals should be carefully assessed over an



**Table 8** Comparison of numerical and binary observation systems

Numerical system	Binary system
<b>Advantages</b>	<b>Advantages</b>
Consistent, provided that guidance is clear and scoring options limited	Potentially more objective assessments – simply 'present' or 'absent'
Considerable amount of data can be collected; data can be statistically analysed	Less time consuming as judgement on numerical scores is not required
<b>Disadvantages</b>	<b>Disadvantages</b>
Element of subjectivity in assigning scores	Less data collected
Can be time consuming	Need to consider threshold for marking as present, which still takes some time and can be subjective
Potentially not sensitive enough to detect any subtle changes	Cannot assign clear intervention points on the basis of a numerical score, although presence of some clinical signs can denote endpoints
Accumulated scores can over- or underestimate severity. Some changes may need to be weighted as more indicative than others, and the significance of certain criteria coinciding should be considered	No description of the intensity of each effect, unless this is built in (e.g. 'pronounced piloerection')

extended period, beginning at neonatal stages, so that any adverse effects can be identified and appropriate indicators used in the routine welfare assessment of the line. It is also good practice to extend this comprehensive inspection to genetic alterations being bred onto different background strains for the first time or being bred to homozygosity (this is especially relevant in mice).

### 2.5.2 The experimental design

The nature of the procedures will also influence the timing, duration and frequency of observations. Procedures at higher levels of severity require more frequent monitoring, as will protocols where a rapid onset of adverse effects is expected. The timescale of adverse effects can be more predictable if they have been scientifically evaluated (for example pertussis vaccine potency testing<sup>37</sup>) or there is a body of experience relating to a particular technique.

The timing of procedures should also be taken into account. There will obviously be a risk of discomfort or pain in the immediate postoperative period. For example, rats immediately following various types of abdominal surgery such as laparotomy, adrenalectomy and bladder manipulations have been found to display specific behaviours including twitching (usually observed as rapid fur movements on the back), back arching, belly pressing and writhing.<sup>9</sup> Such behaviours have been found to occur at varying frequencies depending on the level of discomfort and it is necessary to observe each rat for at least 5 min to ensure that they are detected. Left untreated, these behaviours can be present for up to 24 h following the procedure.

Animals would need to be assessed more frequently post-surgery to assess whether analgesics were effective. Observations could then be made less frequently provided that there were no complications.

### 2.5.3 Housing environment

The time allowed for welfare assessment should take account of environmental stimulation such as nesting material, refuges and other structures provided. It may be necessary to move enrichment items or open nests to observe animals properly.

### 2.5.4 Husbandry practices

Disturbance caused by husbandry procedures such as cage cleaning can have a significant effect on animal behaviour and physiology. Following cage cleaning in the rat, exploratory behaviours, shelter use, heart rate and blood pressure all increase significantly.<sup>38–41</sup> Behavioural and physiological parameters can take up to 2 h to return to pre-cage change levels in rodents,<sup>41</sup> during which time these responses may mask important indicators and confound the welfare assessment. It may be advisable to conduct welfare assessment an hour or two after husbandry procedures such as cage change, as long as the potential severity of the procedure does not require more frequent monitoring.

### 2.5.5 The animals' normal circadian rhythm

It is preferable to observe animals during the time when they would usually be most active, unless there is a potential for sleep disturbance as an adverse effect. Assessing awake, active animals will reduce the likelihood of missing essential signs. In the case of most rodents, this means conducting welfare assessment during the dark period, when they are predominantly active.<sup>9</sup> There are obvious human resource issues associated with observing animals at night, but animals can be housed on an altered or a reversed light regime. Disruptions to the circadian cycle can also be used as a welfare indicator. For example, sleep disruption, reduced activity or responsiveness during periods of normally high activity, or increased activity when animals should be inactive, may indicate adverse effects.<sup>25,42</sup> Care staff may notice changes in circadian behaviour patterns, or it may be appropriate to use sophisticated monitoring techniques such as video monitoring (which can be sped up or sampled for analysis), digital imaging or automated behaviour recognition systems such as Observer<sup>®</sup> (Noldus Information Technology, Wageningen, The Netherlands), Trafficage<sup>®</sup> (NewBehavior AG, Zurich, Switzerland) or HomeCageScan<sup>®</sup> (Clever Systems Inc, Reston, VA, USA).

## 3 Practical welfare assessment

This section provides generic guidance on welfare assessment in practice, which can be applied not only to domesticated mammals, but also to wild animals, fish, reptiles, birds and amphibia. Before implementing the welfare assessment protocol, it may be useful to go through the checklist in Table 9.



**Table 9** Points to check before using the welfare assessment protocol

---

The welfare assessment system is appropriate and tailored to the species, strain and experimental protocol
Everyone is clear about the purpose of the experiment and the scientific objectives
Everyone knows what will actually be done that day to the animal(s), with respect to the scientific procedures that will be carried out (including timing and numbers of animals), the signs that they may expect to see and what the endpoints are
All relevant personnel (e.g. animal technologists and care staff, scientists) know how to use the system and can recognize the signs and interpret them clearly into intervention points
All other relevant staff, who are not part of the welfare assessment team but directly or indirectly involved in animal care, are informed about the project and assessment protocol to an appropriate level
If appropriate, the assessment sheets have been updated on the basis of new signs or combinations of signs observed – they are ‘living documents’
Lines of communication are clear to report any concerns about animals or personnel to responsible persons (e.g. the scientist, veterinarian, senior animal technologist or carer)

---

### 3.1 Making observations

Having the same person, or a very small number of people, observing the animals wherever possible can facilitate consistency and enable assessors to follow the progression of an animal’s condition more accurately.<sup>43</sup> Animals may also be able to tell the difference between different people (for example, on the basis of individual odours), so they may benefit from contact with familiar staff as opposed to strangers.<sup>44</sup> Consistency of staff also enhances job satisfaction for animal technologists and carers, many of whom prefer to be responsible for the same animals throughout a study.

#### 3.1.1 Observation from a distance

Assessing the general appearance, posture and behaviour without provoking any responses provides useful information, so animals should first be observed from a distance without moving, approaching or entering the enclosure or opening the cage. This enables the observer to see whether there are unprovoked behaviours that could indicate welfare problems, such as social animals isolated from conspecifics, or nocturnal animals immobile but out of the nest. Alternatively, individuals may be playing, foraging or allogrooming, indicating that welfare is probably good. Animals should be observed for the predetermined time period to ensure that relevant indicators are more likely to be detected.

The enclosure should also be observed to see whether activities such as nest building, foraging or gnawing are reduced, or whether there is evidence of health problems including bleeding, vomiting or abnormal faeces (Figure 2). Clinical or behavioural indicators that can be observed without touching the animals or influencing their behaviour should be noted on to the assessment sheet at this stage. These include piloerection, postural changes, altered opercular beat frequency in fish, escape behaviour in amphibians, reduced mobility or favouring a surgical site in any species. These signs may be either specific to the project or unexpected, in which case they should be entered into the free text box if a structured sheet is used.

#### 3.1.2 Opening the cage or entering the enclosure

The next stage is to examine the enclosure in more detail by removing the cage lid or entering the enclosure (or closely approaching it as appropriate). Enrichment items or nesting material should be removed or moved aside if necessary, and the animals’ reactions to this – and the observer – should be watched for a suitable period of time, as previously determined. Most species would normally respond with increased activity followed by a settling down period. Any specific or unexpected signs should be recorded, as above.

#### 3.1.3 Handling the animals

After completing the above initial checks, terrestrial animals should be individually caught and handled to measure and score relevant core criteria such as body weight, body condition and temperature. This is also the time to assess those specific criteria that require handling, such as skin tenting, sensitive areas, tumour measurement or parameters that require blood sampling. Handling is stressful for many animals, which can affect both animal welfare and the scientific data.<sup>16</sup> Observing animals following handling (for example, to record body weight) can facilitate observing some relevant behaviours, such as the postsurgical behaviours outlined in section 2.5.2, and reduce the time needed for the assessment.

It is not always appropriate to handle animals. Handling may cause discomfort or pain following certain procedures, or removing animals from their housing would cause excessive distress under some circumstances, as in aquatic animals or some breeding females. In such cases, extra time should be allowed for careful visual observations.

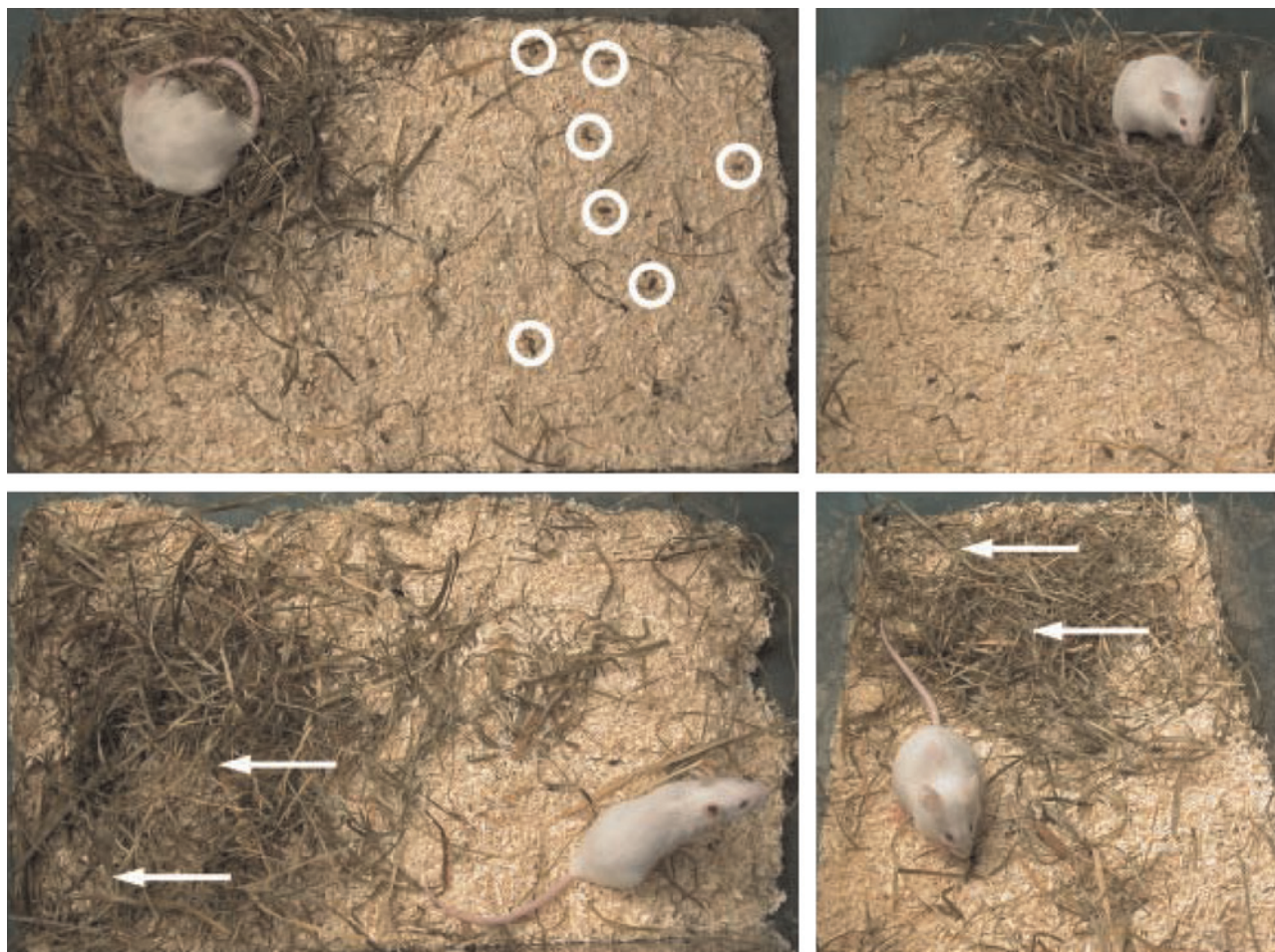
### 3.2 Highlighting potential welfare issues

Carrying out observations and noting them onto the assessment sheets, as set out above, may signify that there is a welfare problem. This may be due to the presence of a key indicator, because the animal’s score has reached a threshold level, or simply because someone feels that something may be wrong. Actions to be taken if animals are (or may be) suffering should have already been agreed and understood by all. There should be a clear line of reporting and everyone should know his or her responsibilities within it.

There should also be a failsafe system for flagging up enclosures containing animals that give cause for concern for any reason. All staff should know that animals housed in enclosures highlighted in this way require special attention and additional monitoring.<sup>11</sup> Methods commonly used to draw attention to animals with welfare problems include message boards outside the room and coloured pegs on enclosures.

## 4 Reviewing welfare records

Timely reviews of welfare assessment records, during and after projects, are essential to ensure that welfare assessment systems are operating effectively; take account of any changes in the adverse effects noted; and ensure that any



**Figure 2** Cage appearance in male HsdHan:NMRI mice with and without postlaparotomy pain. Mice in the upper row have built well-structured nests and are defaecating in a separate area (circles), as expected for the strain. Mice in the lower row are experiencing mild to moderate postlaparotomy pain; the cage area is unstructured without a separate area for defaecation and there are two nest-like resting places (arrows). Reproduced with permission from Arras *et al.*<sup>19</sup>

changes in the nature of the project, knowledge about animal behaviour or new assessment techniques are taken into account.<sup>4</sup>

#### 4.1 Reviewing adverse effects during projects

The key aim of welfare assessment review is to examine how well any adverse effects are being predicted, recognized and alleviated (Table 10). This could be done at one or more set points during a project, and/or in response to specific concerns about animal welfare or the effectiveness of the welfare assessment system that may arise. An advantage of setting appropriate interim review points during the life of a project is that initial, far-reaching systems of observations (for example, in the case of a pilot study or a founder GA animal) can be refined to include only the most relevant parameters or time points. This makes for more efficient use of resources as well as more effective welfare assessment.

Interim review should also help to detect any drift in the welfare consequences and the related clinical or behavioural indicators seen over time. This may be due to factors such as changes in the genotype or strain of animal used, changes in personnel performing procedures or in the duration of the

study, including the aging of the animals in long-term studies. It may be appropriate to report the outcome of interim reviews to the ethics or animal care and use committee.

There should always be a retrospective review of welfare assessment records once a project has been completed, which should contribute to ethical and scientific reviews of the completed project.<sup>46</sup> This should include the elements of interim review listed in Table 10.

**Table 10** Points to include in interim reviews

Assessment of the welfare indicators; that is, the frequency with which they have been observed, with the aim of removing any that are redundant or adjusting the observation protocol
Review of observations recorded in free text boxes, to see whether any new indicators should be added
Review of interventions, including humane endpoints, and whether any animals were found dead; correlation of these with data from the sheets
Review of the timing of observations and interventions, to ensure that the frequency of assessment is appropriate throughout the project
Checks on consistency between observers, using external expertise where necessary. Statistical analysis can be used to confirm consistency in some circumstances <sup>43,45</sup>
Comparison between the predictions of severity made at the project planning stage and the level of severity observed in practice



## 5 Liaison with ethics or animal care and use committees

It may be useful for the welfare assessment team to liaise with relevant ethics or animal care and use committees at the planning stage, to keep the committees informed about the welfare assessment protocol and to seek additional guidance on its effectiveness and acceptability with respect to the local culture of care at the establishment.

Depending on the nature and role of the committee, topics for discussion may include:

- What will happen to each of the animals throughout the project, from sourcing to euthanasia, reuse, release or rehoming;
- What each animal will experience and where adverse effects on welfare are possible – including, but not only as a result of, experimental procedures;
- Which parameters will be monitored during the welfare assessment and how they were decided;
- How frequently animals will be assessed, when and why;
- How observations will be recorded and analysed;
- Explanation of the humane endpoints, how these were set and what will happen if they are exceeded.

This will facilitate discussion on the welfare assessment protocol and may enable it to be further refined before it is implemented for the first time.

## 6 Accessing further information

Welfare assessment is a rapidly developing field and it is vital to ensure that information on new scientific, technical and practical developments is brought to the welfare assessment team so that it can be incorporated into welfare assessment protocols. As well as the literature on welfare assessment, useful information is often gained from other fields. Journals that publish relevant papers together with examples of keywords relating to welfare assessment are listed in the Appendix [<http://la.rsmjournals.com/cgi/content/full/la.2010.010031/DC1>]. Someone on the welfare assessment team could be made responsible for checking these journals regularly for relevant papers. Communicating with other establishments and research teams about experiences with different systems can also help to disseminate good practice and facilitate the exchange of ideas.

## 7 Summary recommendations

### 7.1 Setting up the welfare assessment system

Good practice in welfare assessment is recognized as being necessary for good science as well as animal welfare. A team approach to welfare assessment is most effective, where the team membership is considered in terms of fulfilling appropriate competencies. Sound team cohesion and constructive working relationships are essential, both internally and between the welfare assessment team and other ethics and animal care and use committees. Education and training

should be provided for team members as necessary, to ensure their competence in welfare recognition and assessment.

The baseline standard of good welfare should be carefully defined for each project, using a general list of simple, objective indicators as the basis of the assessment system. A list of potential adverse effects should be set out and tailored to each specific project, using a wide range of information sources. The next stage is to predict those clinical and behavioural signs that may be associated with each adverse effect, taking into account how easy it will be to recognize and assess each one. Intervention points and humane endpoints are also defined at the project planning stage, as part of the process of setting up the assessment system. It may be necessary to conduct pilot studies to define welfare indicators. Current understanding of indicators of positive welfare should be researched and added to the protocol if appropriate.

A flexible approach should be taken to the choice of recording system. Organized animal welfare assessment sheets can reduce subjectivity, but care should be taken when interpreting numerical score sheets, as weighting and addition are not always straightforward. The risk of missing essential signs can be minimized by considering very carefully when animals will be assessed, for how long and how often. It is important to strike a balance between relying on objective assessment schemes and using experienced human judgement – both are necessary and complementary. The proposed welfare assessment protocol should be discussed with all relevant committees; to explain how welfare will be assessed and suffering reduced, and to obtain their input and advice if this is part of their remit.

### 7.2 Using the welfare assessment system

The welfare assessment team should be properly briefed so that everyone knows what they are supposed to be doing. Recording systems, such as assessment sheets, should have been updated if necessary. The animals and their enclosure are usually observed from a distance before opening the cage, or entering the enclosure and handling animals. Clear systems are necessary for highlighting welfare concerns if suffering is believed to be significant or reaches predefined limits. This includes ensuring that everyone is aware of requirements for interventions and humane endpoints and knows how to act on them. Excellent communication and teamwork should be maintained between all persons involved with the study and the welfare assessment team. This will ensure that the entire team works smoothly together to resolve issues rapidly if interventions are required. Animals should always be given the benefit of the doubt with respect to whether or not they are experiencing suffering.

### 7.3 Reviewing the welfare assessment system

Both planned and *ad hoc* interim reviews need to be conducted as appropriate. Part of this process involves relating observations made in practice to the predictions of the level and nature of adverse effects made during project planning.

Retrospective reviews of welfare assessment records can be performed when projects are completed, in conjunction with ethical and scientific reviews and reporting requirements as appropriate. Results should be communicated to all those who would benefit. New knowledge about behaviour and welfare assessment, for example, gained from the scientific literature or from attending meetings, should be incorporated into welfare assessment protocols.

#### ACKNOWLEDGEMENTS

Thanks to Mary Mowat and Barry Phillips for their input and useful comments on the structure of this resource.

#### REFERENCES

- Russell WMS, Burch RL. *The Principles of Humane Experimental Technique*. London: Methuen & Co Ltd, 1959
- Nuffield Council on Bioethics. *The Ethics of Research Involving Animals*. London: Nuffield Council on Bioethics, 2005. See <http://www.nuffieldbioethics.org/> (last checked 26 May 2010)
- Reinhardt V, Reinhardt A. *Variables, Refinement and Environmental Enrichment for Rodents and Rabbits Kept in Research Institutions*. Washington, DC: Animal Welfare Institute, 2006
- National Health and Medical Research Council. *Guidelines to Promote the Wellbeing of Animals used for Scientific Purposes: The Assessment and Alleviation of Pain and Distress in Research Animals*. Canberra: Australian Government, 2008. See <http://www.nhmrc.gov.au/> (last checked 26 May 2010)
- Institute for Laboratory Animal Research (ILAR). *Recognition and Alleviation of Distress in Laboratory Animals*. Washington, DC: National Academy Press, 2008
- Morton DB, Griffiths PHM. Guidelines on the recognition of pain, distress and discomfort in experimental animals and an hypothesis for assessment. *Vet Rec* 1985;**116**:431–6
- Morton DB. Adverse effects in animals and their relevance to refining scientific procedures. *ATLA* 1990;**18**:29–39
- Firth AM, Haldane SL. Development of a scale to evaluate postoperative pain in dogs. *JAVMA* 1999;**214**:651–9
- Roughan JV, Flecknell PA. Behavioural effects of laparotomy and analgesic effects of ketoprofen and carprofen in rats. *Pain* 2001;**90**:65–74
- Murrell JC, Psatha EP, Scott EM, *et al.* Application of a modified form of the Glasgow pain scale in a veterinary teaching centre in the Netherlands. *Vet Rec* 2008;**162**:403–8
- Hawkins P. Recognising and assessing pain, suffering and distress in laboratory animals. *Lab Anim* 2002;**36**:378–95. See <http://tinyurl.com/yc37duj> (last checked 26 May 2010)
- Mason G, Rushen J, eds. *Stereotypic Animal Behaviour – Fundamentals and Applications to Welfare*. Wallingford, UK: CABI, 2006. See <http://www.aps.uoguelph.ca/~gmason/StereotypicAnimalBehaviour/index.shtml> (last checked 26 May 2010)
- Mellor DJ, Reid CSW. Concepts of animal well-being and predicting the impact of procedures on experimental animals. In: Baker RM, Jenkins G, Mellor DJ, eds. *Improving the Well-being of Animals in the Research Environment*. Glen Osmond, Australia: ANZCCART, 1994:3–18
- Mason G, Wilson D, Hampton C, Würbel H. Non-invasively assessing disturbance and stress in laboratory rats by scoring chromodacryorrhoea. *ATLA* 2004;**32**(Suppl. 1):153–9
- Schreuder MF, Fodor M, van Wijk JAE, Delemarre-van de Waal HA. Weekend versus working day: differences in telemetric blood pressure in male Wistar rats. *Lab Anim* 2007;**41**:86–91
- Burn CC, Deacon RM, Mason GJ. Marked for life? Effects of early cage-cleaning frequency, delivery batch, and identification tail-marking on rat anxiety profiles. *Dev Psychobiol* 2008;**50**:266–77
- Dickinson AL, Leach MC, Flecknell PA. Influence of early neonatal experience on nociceptive responses and analgesic effects in rats. *Lab Anim* 2009;**43**:11–16
- Leach MC, Thornton PD, Main DCJ. Identification of appropriate measures for the assessment of laboratory mouse welfare. *Anim Welf* 2008;**17**:161–70
- Arras M, Rettich A, Cinelli P, *et al.* Assessment of post-laparotomy pain in laboratory mice by telemetric recording of heart rate and heart rate variability. *BMC Vet Res* 2007;**3**:16 doi: 10.1186/1746-6148-3-16. See <http://www.biomedcentral.com/1746-6148/3/16> (last checked 26 May 2010)
- Wright-Williams SL, Courade J-P, Richardson CA, *et al.* Effects of vasectomy surgery and meloxicam treatment on faecal corticosterone levels and behaviour in tow strains of laboratory mouse. *Pain* 2007;**130**:108–18
- Blackburn-Munro G. Pain-like behaviours in animals – how human are they? *Trends Pharmacol Sci* 2004;**25**:299–305
- Langford DJ, Bailey AL, Chanda ML, *et al.* Coding of facial expressions of pain in the laboratory mouse. *Nat Methods* 2010;**7**:447–9
- Morton DB, Hawkins P, Bevan R, *et al.* Refinements in telemetry procedures. *Lab Anim* 2003;**37**:261–99
- FAWC (Farm Animal Welfare Council). *Farm Animal Welfare in Great Britain: Past, Present and Future*. London: FAWC, 2009. See <http://www.fawc.org.uk/pdf/ppf-report091012.pdf> (last checked 26 May 2010)
- Abou-Ismaïl UA, Burman OHP, Nicol CJ, Mendl M. Can sleep behaviour be used as an indicator of stress in group-housed rats (*Rattus norvegicus*)? *Anim Welf* 2007;**16**:185–8
- Van der Harst JE, Spruijt BM. Tools to measure and improve animal welfare: reward-related behaviour. *Anim Welf* 2007;**16**(Suppl. 1):67–73
- Boissy A, Manteuffel G, Jensen MB, *et al.* Assessment of positive emotions in animals to improve their welfare. *Physiol Behav* 2007;**92**:375–97
- Napolitano F, Knierim U, Grasso F, De Rosa G. Positive indicators of cattle welfare and their applicability to on-farm protocols. *Ital J Anim Sci* 2009;**8**(Suppl. 1):355–65
- Hurst JL, Barnard CJ, Nevison CM, West CD. Housing and welfare in laboratory rats: welfare implications of isolation and social contact among caged males. *Anim Welf* 1997;**6**:329–47
- Kirkwood JK, Roberts EA, Weddell S, *et al.* (eds). Quality of life: the heart of the matter. *Proceedings of the UFAW/BVA Symposium*. The Royal Society, London, 13–14 September 2006. *Anim Welf* 2007;**16**(Suppl. 1):1–179
- Wemelsfelder F. How animals communicate quality of life: the qualitative assessment of behaviour. *Anim Welf* 2007;**16**(Suppl. 1):25–31
- Yeates JW, Main DCJ. Assessment of positive welfare: a review. *Vet J* 2008;**3**:293–300
- Honess P, Wolfensohn S. The extended welfare assessment grid: a matrix for the assessment of welfare and cumulative suffering in experimental animals. *ATLA* 2010;**38**:205–12
- Shively CA, Register TC, Friedman DP, *et al.* Social stress-associated depression in adult female cynomolgus monkeys (*Macaca fascicularis*). *Biol Psychol* 2005;**69**:67–84
- Olsson IAS, Nevison CM, Patterson-Kane EG, *et al.* Understanding behaviour: the relevance of ethological approaches in laboratory animal science. *Appl Anim Behav Sci* 2003;**81**:245–64
- Rose M. Welfare phenotyping of genetically-modified mice. *ATLA* 2009;**37**:181–6
- Hendriksen CFM, Steen B, Visser J, *et al.* The evaluation of humane endpoints in pertussis vaccine potency testing. In: Hendriksen CFM, Morton DB, eds. *Humane Endpoints in Animal Experiments for Biomedical Research*. Proceedings of the International Conference, 22–25 November 1998, Zeist, The Netherlands. London: Royal Society of Medicine Press, 1999:106–13
- Duke JL, Zammit TG, Lawson DM. The effects of routine cage-changing on cardiovascular and behavioral parameters in male Sprague-Dawley rats. *Contemp Top Lab Anim Sci* 2001;**40**:17–20
- Sharp J, Zammit T, Azar T, Lawson DM. Stress-like responses to common procedures in individually and group-housed female rats. *Contemp Top Lab Anim Sci* 2003;**42**:9–18
- Burn CC, Peters A, Mason GJ. Acute effects of cage cleaning at different frequencies on laboratory rat behaviour and welfare. *Anim Welf* 2006;**15**:161–71
- Castellano-Carlos MJ, Baumans V. The impact of light, noise, cage cleaning and in-house transport on welfare and stress of laboratory rats. *Lab Anim* 2009;**43**:311–27



- 42 Abou-Ismaïl UA, Burman OHP, Nicol CJ, Mendl M. Let sleeping rats lie: does the timing of husbandry procedures affect laboratory rat behaviour, physiology and welfare? *Appl Anim Behav Sci* 2008;**111**:329–41
- 43 Honess P, Gimpel J, Wolfensohn S, Mason G. Alopecia scoring: the quantitative assessment of hair loss in captive macaques. *ATLA* 2005;**33**:193–206
- 44 Smith JJ, Hadzic V, Li X, *et al.* Objective measures of health and well-being in laboratory rhesus monkeys (*Macaca mulatta*). *J Med Primatol* 2006;**35**:388–96
- 45 Channon AJ, Walker AM, Pfau T, *et al.* Variability of Manson and Leaver locomotion scores assigned to dairy cows by different observers. *Vet Rec* 2009;**164**:388–92
- 46 Jennings M, Howard B. *Guidance Notes on Retrospective Review: A Discussion Document Prepared by the LASA Ethics and Training Group*. Tamworth: LASA, 2004. See <http://www.lasa.co.uk/publications.html> (last checked 26 May 2010)

(Accepted 7 August 2010)

## Appendix

The Appendix sets out useful journals, web-based resources and discussion forums relating to welfare assessment. It forms part of the full report or it can be downloaded separately at [<http://la.rsmjournals.com/cgi/content/full/la.2010.010031/DC1>]

## Appendix

### A guide to defining and implementing protocols for the welfare assessment of laboratory animals: eleventh report of the BVAWF/FRAME/RSPCA/UFAW Joint Working Group on Refinement\*

P Hawkins, D B Morton, O Burman, N Dennison, P Honess, M Jennings, S Lane, V Middleton, J V Roughan, S Wells and K Westwood

\*British Veterinary Association Animal Welfare Foundation (BVAWF), the Fund for the Replacement of Animals in Medical Experiments (FRAME), the Royal Society for the Prevention of Cruelty to Animals (RSPCA) and the Universities Federation for Animal Welfare (UFAW). See <http://www.rspca.org.uk/sciencegroup/researchanimals/implementing3rs/refinement>

#### Appendix: resources

This appendix accompanies the above paper in *Laboratory Animals*. It sets out useful journals, web-based resources and discussion forums relating to welfare assessment at the time of writing (July 2010).

#### Journals and keywords

These journals frequently publish papers relevant to welfare assessment:

<i>Alternatives to Laboratory Animals (ATLA)</i>	<a href="http://www.frame.org.uk/index.php">http://www.frame.org.uk/index.php</a>
<i>Applied Animal Behaviour Science</i>	<a href="http://www.applied-ethology.org/thejournalaabs.htm">http://www.applied-ethology.org/thejournalaabs.htm</a>
<i>Animal Technology and Welfare</i>	<a href="http://www.iat.org.uk/publications/atw.htm">http://www.iat.org.uk/publications/atw.htm</a>
<i>Animal Welfare</i>	<a href="http://www.ufaw.org.uk/animal.php">http://www.ufaw.org.uk/animal.php</a>
<i>Contemporary Topics in Laboratory Animal Science</i>	<a href="http://www.aalas.org/index.aspx">http://www.aalas.org/index.aspx</a>
<i>Journal of Applied Animal Welfare Science</i>	<a href="http://www.psyeta.org/jaaws/">http://www.psyeta.org/jaaws/</a>
<i>Lab Animal and Lab Animal Europe</i>	<a href="http://www.labanimal.com/laband/index.html">http://www.labanimal.com/laband/index.html</a>
	<a href="http://www.labanimaleurope.eu/">http://www.labanimaleurope.eu/</a>
<i>Laboratory Animals</i>	<a href="http://la.rsmjournals.com/">http://la.rsmjournals.com/</a>
<i>Physiology and Behavior</i>	<a href="http://www.elsevier.com/">http://www.elsevier.com/</a>

Hawkins P. Recognising and assessing pain, suffering and distress in laboratory animals. *Lab Anim* 2002;**36**:378–95. See <http://tinyurl.com/yc37duj>

Kirkwood JK, Roberts EA, Weddell S, et al. eds. *Quality of Life: The Heart of the Matter*. Proceedings of the UFAW/BVA Symposium, The Royal Society, London, 13–14 September 2006. *Anim Welf* 2007;**16**(Suppl. 1):1–179

Mason G, Rushen J, eds. *Stereotypic Animal Behaviour – Fundamentals and Applications to Welfare*. Wallingford, UK: CABI, 2006. See <http://www.aps.uoguelph.ca/~gmason/StereotypicAnimalBehaviour/index.shtml>

Mayer J. Use of behavior analysis to recognize pain in small mammals. *Lab Anim* 2007;**7**:16–26

Mellor DJ, Thornber PM, Bayvel AC, Kahn S, eds. *Scientific Assessment and Management of Animal Pain*. World Organisation for Animal Health (OIE) Technical Series Volume 10. Paris: OIE, 2008

Nuffield Council on Bioethics. *The Ethics of Research Involving Animals*. London: Nuffield Council on Bioethics, 2005. See <http://www.nuffieldbioethics.org/animal-research>

#### Discussion forums

American Association for Laboratory Animal Science (AALAS) discussion groups: CompMed™ for veterinarians, animal technologists and care staff, animal facility managers, researchers and graduate/veterinary students; TechLink for animal technologists and care staff who are AALAS members; and IACUC-Forum for AALAS members and their IACUC members and staff. See [http://www.aalas.org/online\\_resources/listserves.aspx](http://www.aalas.org/online_resources/listserves.aspx)

Laboratory Animal Refinement and Enrichment Forum (LAREF) is open to animal technologists and care staff, students, attending veterinarians and researchers who have or had first-hand experience in the care of animals kept in laboratories. See the Animal Welfare Institute website; <http://www.awionline.org/> and search for 'LAREF'.

#### Guidelines

American College of Laboratory Animal Medicine (ACLAM). *Guidelines for the Assessment and Management of Pain in Rodents and Rabbits*, 2006. See <http://www.tinyurl.com/65ez5vh>

Companion Animal Welfare Council (CAWC). *Companion Animal Welfare Assessment*. Sidmouth, Devon: CAWC, 2009. See <http://www.cawc.org.uk/reports>

Institute for Laboratory Animal Research (ILAR). *Recognition and Alleviation of Distress in Laboratory Animals*. Washington, DC: National Academies Press, 2008

Institute for Laboratory Animal Research (ILAR). *Recognition and Alleviation of Pain in Laboratory Animals*. Washington, DC: National Academies Press, 2009. See [http://dels.nas.edu/animal\\_pain/](http://dels.nas.edu/animal_pain/)

Johansen R, Needham JR, Colquhoun DJ, et al. Guidelines for health and welfare monitoring of fish used in research. *Lab Anim* 2006;**40**:323–40

National Health and Medical Research Council. *Guidelines to Promote the Wellbeing of Animals Used for Scientific Purposes: The Assessment and Alleviation of Pain and Distress in Research Animals*. Canberra: Australian Government, 2008. See <http://www.nhmrc.gov.au> and search for "pain and distress"

The following keywords are helpful when searching for information on welfare assessment			
affect	harm benefit assessment	positive indicators	severity scale
animal welfare	humane endpoints	positive welfare	sickness behavior(u)r
animal suffering	needs	qualitative behavior(u)r assessment	stress
assessment	objective assessment	quality of life	suffering
discomfort	pain	refinement	welfare assessment
distress	pain assessment	score sheets	welfare indicator
harm assessment	pain measurement	scoring system	welfare outcomes

#### Recommended reading and web-based resources

##### Background reading

Flecknell PA. *Laboratory Animal Anaesthesia*. 3rd edn. London: Elsevier, Academic Press, 2009

Gregory NG. *Physiology and Behaviour of Animal Suffering*. Oxford: UFAW/Blackwell Science, 2004

Organisation for Economic Co-operation and Development (OECD). Guidance document on the recognition, assessment, and use of clinical signs as humane endpoints for experimental animals used in safety evaluation. *OECD Environmental Health and Safety Publications Series on Testing and Assessment No. 19*. Paris: OECD, 2000

Royal (Dick) School of Veterinary Studies, University of Edinburgh. *Guidelines for the Recognition and Assessment of Animal Pain*. See <http://www.link.vet.ed.ac.uk/animalpain/>

Wells DJ, Playle LC, Enser WEJ, *et al.* Assessing the welfare of genetically altered mice. Full version at <http://www.nc3rs.org.uk/gamice>. Summary in *Lab Anim* 2006;**40**:111–14

Workman P, Aboagye EO, Balkwill F, *et al.* Guidelines for the welfare and use of animals in cancer research. *Br J Cancer* 2010;**102**:1555–77. See <http://tinyurl.com/398ql2f>

### Examples of welfare indicators

ACLAM (American College of Laboratory Animal Medicine).

*Guidelines for the Assessment and Management of Pain in Rodents and Rabbits*. ACLAM, 2006. See <http://www.tinyurl.com/65ez5vh>

Dobromylskij P, Flecknell PA, Lascelles BD, *et al.* Pain assessment. In: Flecknell P, Waterman-Pearson A, eds. *Pain Management in Animals*. London: WB Saunders, 2000:53–79, Ch. 4

Hawkins P. Recognising and assessing pain, suffering and distress in laboratory animals. *Lab Anim* 2002;**36**:378–95. See <http://tinyurl.com/yc37duj>

Institute for Laboratory Animal Research (ILAR). *Recognition and Alleviation of Distress in Laboratory Animals*. Washington, DC: National Academies Press, 2008

Institute for Laboratory Animal Research (ILAR). *Recognition and Alleviation of Pain in Laboratory Animals*. Washington, DC: National Academies Press, 2009. See [http://dels.nas.edu/animal\\_pain/](http://dels.nas.edu/animal_pain/)

### Links to other resources

Altweb section on refinement and welfare assessment. See <http://altweb.jhsph.edu/>

Canadian Council on Animal Care (CCAC) Welfare assessment. See <http://www.ccac.ca/en/alternatives/> and click on 'Refinement alternatives' and 'Welfare assessment'

National Centre for the Three Rs (NC3Rs) Welfare assessment. See <http://www.nc3rs.org.uk/welfareassessment>

### Training

Assessing the Health and Welfare of Laboratory Animals (AHWLA). See <http://www.ahwla.org.uk/index.html>

### Retrospective review

Jennings M, Howard B. *Guidance Notes on Retrospective Review: A Discussion Document Prepared by the LASA Ethics and Training Group*. Tamworth: LASA, 2004. See <http://www.lasa.co.uk/publications.html>

Brown M, Carbone L, Conlee KM, *et al.* Report of the Working Group on animal distress in the laboratory. *Lab Anim Europe* 2006;**6**:41–5

ILAR. Humane endpoints for animals used in biomedical research and testing. *ILAR J* 2000;**41**:59–123

Karas AZ. Barriers to assessment and treatment of pain in laboratory animals. *Lab Anim* 2006;**35**:38–45

Mayer J. Use of behaviour analysis to recognize pain in small mammals. *Lab Anim* 2007;**7**:16–26

### Resources for ethical and animal care and use committees

The RSPCA Research Animals Department website includes resources for members of local Ethical Review Processes (ERPs) in the UK that are also useful for other forms of ethical or animal care and use committee worldwide. It addresses a number of relevant topics including *Severity of suffering*. <http://www.rspca.org.uk/ethicalreview>